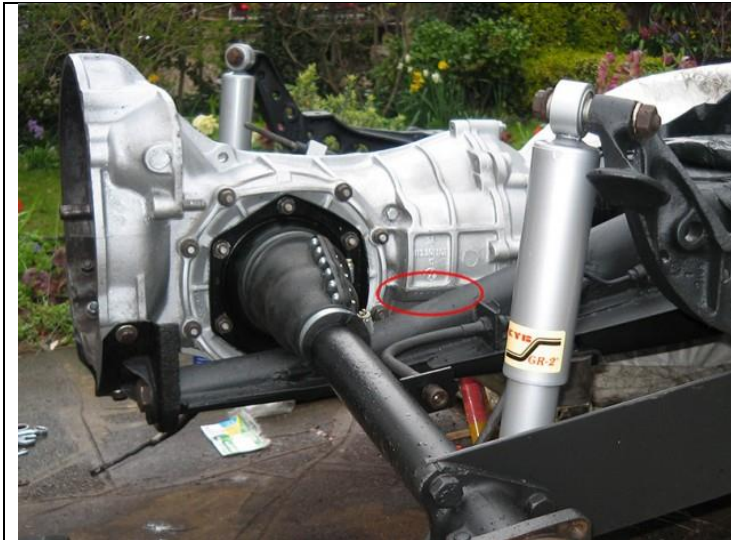




Volkswagen gearbox codes

Knowing what gearbox you've got in your air-cooled VW is always a good thing, especially if you're changing/upgrading the engine. And it always pays to know exactly what gearbox you're looking at when it comes to buying a used replacement.



The code is located on the side of the box (circled in the photo above). Don't use the VW part number (113.301.103) as that is the number for that case. What you need is the code below that starts with one of the below letters. If your case has no letters then you've got an earlier gearbox and you can try to date it here: www.thesamba.com

Gearbox Code	Engine Size	Gear ratios 1/2/3/4 Final drive	Notes
AA	1200	3.80 / 2.06 / 1.32 / 0.89 4.375	From Chassis No 0 981 810
AB	1300	3.78 / 2.06 / 1.26 / 0.93 4.375	Up to 8/70
AC	1500	3.80 / 2.06 / 1.26 / 0.89 4.125	also some 1300 from 8/70
AD	1200	3.80 / 2.06 / 1.32 / 0.89 4.375	Limited Slip Differential
AE	1300	3.78 / 2.06 / 1.26 / 0.93 4.375	Limited Slip Differential



AF	1500	3.80 / 2.06 / 1.26 / 0.89 4.125	L.S. Differential >8/70; also some 1300 8/70>
AG	1200	3.80 / 2.06 / 1.32 / 0.89 4.375	Type 147 Fridolin
AH	1500/1600	3.80 / 2.06 / 1.26 / 0.89 4.125	IRS from 8/68 – 8/72
AK	1500/1600	3.80 / 2.06 / 1.26 / 0.93 3.875	Type 181
AL	1500-1600	3.80 / 2.06 / 1.26 / 0.93 3.875	Type 181 with LSD
AM	1300	3.78 / 2.06 / 1.26 / 0.93 4.375	Saloon and Cabrio from 8/70
AN	1600	3.80 / 2.06 / 1.26 / 0.93 3.875	Karmann Ghia with IRS from 8/70
AO	1600	3.80 / 2.06 / 1.26 / 0.89 4.125	LSD 8/70 – 8/72
AR	1600	3.80 / 2.06 / 1.26 / 0.89 4.125	LSD 8/70 – 8/72
AR	1600	3.80 / 2.06 / 1.26 / 0.93 3.875	Karmann Ghia with LSD from 8/70
AS	1600(GT)	3.80 / 2.06 / 1.26 / 0.93 3.875	From 3/72
AT	1600	3.80 / 2.06 / 1.26 / 0.93 3.875	1303s and Cabrio from 3/72
AU	1600	3.80 / 2.06 / 1.26 / 0.93 3.875	1303s and Cabrio from 3/72 with LSD
BA	1300/1500	3.80 / 2.06 / 1.26 /	Semi Automatic from 8/68 – 8/70



		0.93 4.375	
BC	1300/1500	3.80 / 2.06 / 1.26 / 0.93 4.375	Semi Automatic from 8/68 – 8/70 with LSD
BE	1600	3.80 / 2.06 / 1.26 / 0.89 4.125	Semi Automatic from 8/68 – 8/70
BF	1600	3.80 / 2.06 / 1.26 / 0.89 4.125	Semi Automatic from 8/68 – 8/70 with LSD
BG	1300	3.80 / 2.06 / 1.26 / 0.89 4.125	Karmann Ghia Semi Automatic from 8/70
BH	1300	3.80 / 2.06 / 1.26 / 0.89 4.125	K. Ghia Semi Automatic with LSD
BJ	1300	3.78 / 2.06 / 1.26 / 0.93 4.375	Semi Automatic from 8/70
BK	1300	3.78 / 2.06 / 1.26 / 0.93 4.375	Semi Automatic from 8/70 with LSD
DA	1500/1600	3.80 / 2.06 / 1.26 / 0.89 4.125	Type 3 Swing-axle up to 8/68
DB	1500/1600	3.80 / 2.06 / 1.26 / 0.89 4.125	Type 3 Swing-axle up to 8/68 with LSD
DC	1500/1600	3.80 / 2.06 / 1.26 / 0.89 4.125	Type 3 IRS from 8/68
DD	1500/1600	3.80 / 2.06 / 1.26 / 0.89 4.125	Type 3 IRS from 8/68

1/2/3/4 = 1st, 2nd, 3rd and 4th gears respectively.

FD = Final Drive

